

Car Report

ANNUAL REPORT 2026

Trusted Reports Confident Drives







www.inspectsify.co.uk

Documentation Review



Reviews

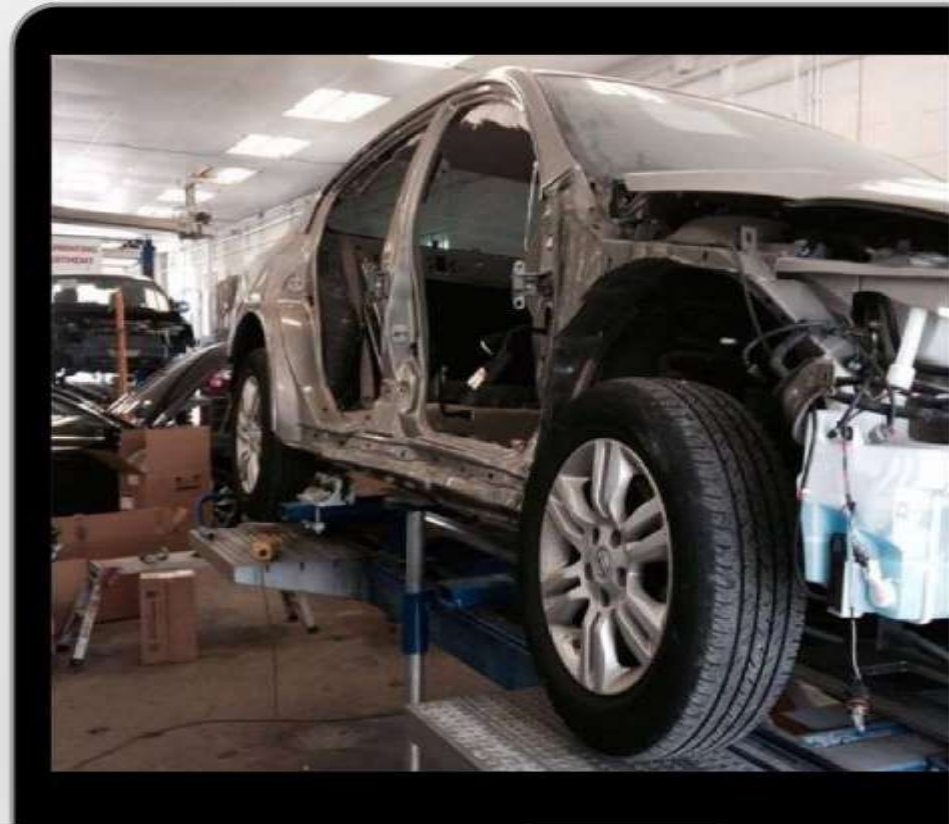


-  All essential documents including the purchase invoice, warranty papers, and maintenance logs have been reviewed.
-  All documents are authentic and complete.
-  Maintenance history is consistent and up to date.
-  Ownership records show no discrepancies or disputes.



Structural & Accident Assessment

A comprehensive inspection reveals no signs of significant structural damage, impact marks, or accident-related repairs. The bike's frame, fork, swingarm, and all mounting points show clean, uniform alignment, consistent with factory specifications. Body panels, fairings, and safety-critical components—such as brakes, handlebar assemblies, and wheel hubs—fit securely and exhibit no warping, cracks, or irregular wear.



General Information



General Information

A central graphic for a Rover car. At the top is a yellow license plate with a UK flag icon and the letter 'F'. Below it is the Rover logo, a shield with a red and gold design and the word "ROVER" above it. To the left of the logo, the text "Year 2005" and "Fuel Diesel" is displayed. To the right, "0-60mph" and "Power 129 BHP" is displayed. A dark green bar at the bottom left of the graphic contains the text "General information".

Make	ROVER
Model	75 CDTI CONNOISSEUR SE
Colour	Gold
Year of manufacture	2005
Top speed	113 mph
Gearbox	5 speed automatic

Engine Report



Engine

Engine & fuel consumption

Power	129 BHP
Max. torque	300 Nm at 1.900 rpm
Engine capacity	1.951 cc
Cylinders	4

Fuel Report



Fuel

Fuel type	Diesel
Consumption city	28.3 mpg
Consumption extra urban	54.3 mpg
Consumption combined	40.9 mpg
CO2 emission	190 g/km
CO2 label	J



MOT HISTORY



MOT history	
MOT expiry date	2026-07-28
MOT pass rate	83 %
MOT passed	19
Failed MOT tests	4
Total advice items	45
Total items failed	5

MOT #23	2025-07-28 15:09
MOT test number	620999776285
Result	✓ Passed
Next expiry date	2026-07-28
Advice	Nearside Rear Upper Suspension arm corroded but not seriously weakened (5.3.3 (b) (i))
Advice	Offside Rear Upper Suspension arm corroded but not seriously weakened (5.3.3 (b) (i))
Advice	Offside Front Anti-roll bar linkage ball joint has slight play (5.3.4 (a) (i))
Advice	Offside Rear Suspension component mounting prescribed area is corroded but not considered excessive (5.3.6 (a) (i))
Advice	Rear Exhaust has a minor leak of exhaust gases back box (6.1.2 (a))
Advice	Nearside Rear Brake disc worn, pitted or scored, but not seriously weakened (1.1.14 (a) (ii))
Advice	Coolant leak radiator

MOT #22	2025-07-24 09:40
MOT test number	497222237914
Result	✗ Failed
Major	Exhaust emissions exceed manufacturer's specified limit (8.2.2.2 (a))
Major	Offside Headlamp aim projected beam image is obviously incorrect (4.1.2 (c))
Advice	Nearside Rear Upper Suspension arm corroded but not seriously weakened (5.3.3 (b) (i))
Advice	Offside Rear Upper Suspension arm corroded but not seriously weakened (5.3.3 (b) (i))
Major	Nearside Rear Suspension component mounting prescribed area excessively corroded significantly reducing structural strength (5.3.6 (a) (i))
Advice	Offside Front Anti-roll bar linkage ball joint has slight play (5.3.4 (a) (i))
Advice	Offside Rear Suspension component mounting prescribed area is corroded but not considered excessive (5.3.6 (a) (i))
Major	Nearside Front Lower Suspension arm ball joint dust cover no longer prevents the ingress of dirt (5.3.4 (b) (ii))
Advice	Rear Exhaust has a minor leak of exhaust gases back box (6.1.2 (a))
Advice	Nearside Rear Brake disc worn, pitted or scored, but not seriously weakened (1.1.14 (a) (ii))
Advice	Coolant leak radiator

MOT HISTORY

MOT HISTORY INSPECTSIFY

MOT #21	2024-07-18 15:07
MOT test number	511803979924
Result	✓ Passed
Advice	Rear Exhaust has a minor leak of exhaust gases (6.1.2 (a))
Advice	Nearside Rear caliper slide pin caps missing
MOT #20	2024-07-11 13:57
MOT test number	428573581584
Result	✗ Failed
Major	Brake pedal anti-slip provision worn smooth (1.1.2 (c))
Advice	Rear Exhaust has a minor leak of exhaust gases (6.1.2 (a))
Major	Fuel system component leaking fuel tank leaking (6.1.3 (b) (i))
Major	Steering linkage ball joint has excessive play rack end (2.1.3 (b) (i))
Advice	Nearside Rear caliper slide pin caps missing
MOT #19	2023-07-29 08:45
MOT test number	510021280858
Result	✓ Passed
Advice	Nearside Front Tyre slightly damaged/cracking or perishing Cracking on outer edge (5.2.3 (d) (ii))
Advice	Offside Front Outer Tyre slightly damaged/cracking or perishing Edge cracking (5.2.3 (d) (ii))
Minor	Nearside Front Lower Suspension component ball joint dust cover severely deteriorated (5.3.4 (b) (i))
MOT #18	2022-05-17 08:40
MOT test number	540480572522
Result	✓ Passed
Advice	Tyre slightly damaged/cracking or perishing Both front tyres slightly perished on outer edge (5.2.3 (d) (ii))
MOT #17	2021-08-14 09:13
MOT test number	403902785086
Result	✓ Passed
MOT #16	2020-07-22 10:45
MOT test number	327713037041
Result	✓ Passed
Advice	Rear Brake disc worn, pitted or scored, but not seriously weakened rusted face (1.1.14 (a) (ii))
Advice	Hand brake travel

MOT HISTORY

MOT HISTORY



MOT #15	2019-04-08 14:58
MOT test number	540567599439
Result	✓ Passed
MOT #14	2018-04-10 13:35
MOT test number	813833763321
Result	✓ Passed
MOT #13	2018-04-06 10:10
MOT test number	938463157206
Result	✗ Failed
Fail	Nearside Front Shock absorber has a serious fluid leak (2.7.3)
Fail	Nearside Front Anti-roll bar linkage ball joint dust cover excessively damaged so that it no longer prevents the ingress of dirt (2.4.G.2)
Fail	Offside Front Anti-roll bar linkage ball joint dust cover excessively damaged so that it no longer prevents the ingress of dirt (2.4.G.2)
MOT #12	2017-04-11 08:47
MOT test number	967856848209
Result	✓ Passed
Advice	Parking brake lever has little reserve travel (3.1.6b)
Advice	Nearside Front Track rod end ball joint has slight play (2.2.B.1f)
MOT #11	2016-04-08 15:14
MOT test number	189906227602
Result	✓ Passed
MOT #10	2015-10-20 14:18
MOT test number	232077287743
Result	✓ Passed
Advice	Nearside Rear Tyre worn close to the legal limit 2mm (4.1.E.1)
Advice	Offside Rear Tyre worn close to the legal limit 3mm (4.1.E.1)
Advice	Rear Suspension arm corroded but not seriously weakened both (2.4.G.1)
Advice	Wiper blades smear
MOT #9	2015-03-06 15:32
MOT test number	156225165058
Result	✓ Passed

MOT HISTORY

MOT HISTORY



MOT #8	2014-03-13 11:02
MOT test number	987412374085
Result	✓ Passed
Advice	Front brake disc worn, pitted or scored, but not seriously weakened (3.5.1)
Advice	Rear brake disc worn, pitted or scored, but not seriously weakened (3.5.1)
MOT #7	2014-03-12 18:23
MOT test number	278701974072
Result	✗ Failed
Fail	Nearside Rear coil spring broken (2.4.C.1a)
Fail	Offside Rear coil spring broken (2.4.C.1a)
Advice	Front brake disc worn, pitted or scored, but not seriously weakened (3.5.1)
Advice	Rear brake disc worn, pitted or scored, but not seriously weakened (3.5.1)
MOT #6	2012-12-15 13:14
MOT test number	207780252380
Result	✓ Passed
Advice	Nearside Front Tyre worn close to the legal limit (4.1.E.1)
Advice	Offside Front Tyre worn close to the legal limit (4.1.E.1)
MOT #5	2012-02-25 14:58
MOT test number	148846152410
Result	✓ Passed
MOT #4	2011-02-25 12:28
MOT test number	998496351080
Result	✓ Passed
Advice	Nearside Front Tyre worn close to the legal limit (4.1.E.1)
Advice	Nearside Rear Seat belt stitching slightly frayed (5.2.2b)
MOT #3	2010-03-20 11:10
MOT test number	113569270084
Result	✓ Passed
MOT #2	2009-03-18 10:45
MOT test number	672507579031
Result	✓ Passed
MOT #1	2008-03-14 16:51
MOT test number	833274778018

Tax & MOT check



Tax & MOT check

Tax & MOT check

✓ **Taxed**
Tax due: 1 April 2027

✓ **MOT**
Expires: 28 July 2026

Tax status	Valid until 1 April 2027
Days left	339
MOT expiry date	28 July 2026
Full MOT history	See MOT history

Tax calculation

Vehicle class	49
Band	J
Single payment (12 months)	£ 395,00,-
Single six month payment	£ 217,25,-
Total payable by 12 monthly instalments	£ 414,75,-

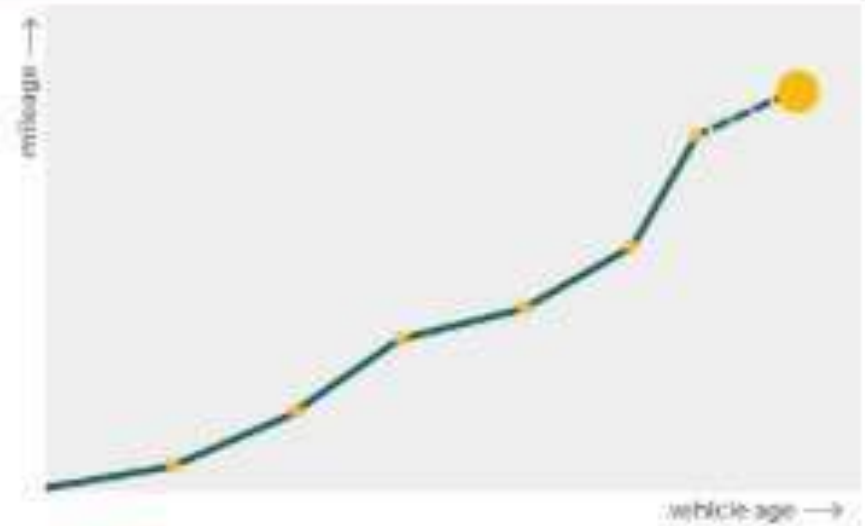
MILAGE CHECK



MILAGE CHECK HISTORY

Mileage check

Odometer	In miles
Mileage registrations	24
First mileage registration	2005-03-21
Last registration	2025-07-28
Complete history	See info



INSURANCE REPORT



Insurance Report

INSURED

in Navigate today

11:32:23 26 Apr 2026

Vehicle Registration Number:



VEHICLE HISTORY STATUS



Vehicle History Status

Our records check confirms that the bike has a clean and verified history. There are no theft reports, no outstanding financial liens, and no major accident or damage records associated with this bike.

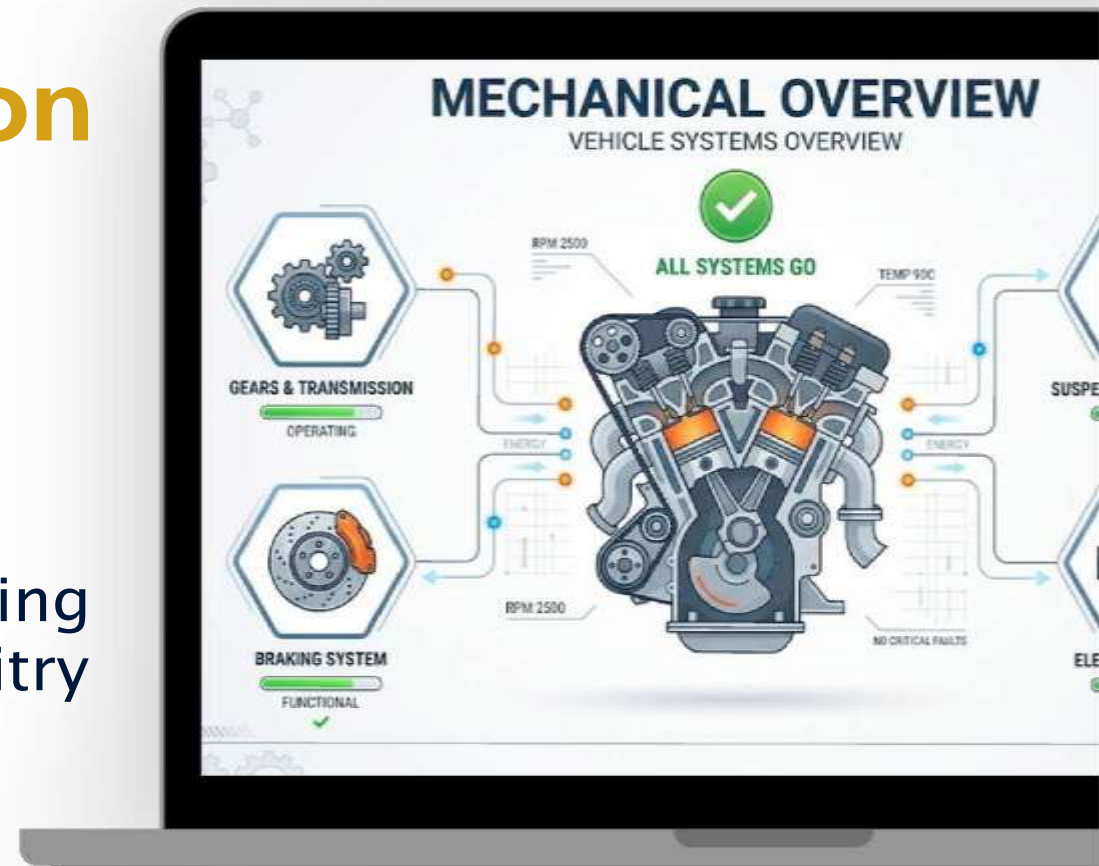


MECHANICAL CONDITION OVERVIEW



Mechanical Condition Overview

The bike is reported to be in excellent running condition. Key systems including the engine, gearbox, suspension setup, braking components, and electrical circuitry operate normally with no critical faults detected.



THANK YOU FOR CHOOSING US

GET IN TOUCH

Thank you for exploring vehicles with us. Your curiosity drives positive change. For more information or to schedule a consultation, reach us at

 support@inspectify.co.uk

 www.inspectify.co.uk

 **INSPECTIFY**

www.inspectify.co.uk